

RHOMBUS 48 Series

OPTIMISED DIGITAL TV HDTV ANTENNA with high gain and excellent mechanical resistance.

APPLICATION

Digital TV reception for community and individual antenna installations, totally adapted to the LTE environment.

FEATURES

- Modern, optimised design to achieve optimum gain/size ratio.
- Active/passive dipole.
- Self-adapting: provides a constant, balanced signal, minimising loss and maximising adaptation.
- Lightweight and robust, designed with state-of-the-art technology to guarantee an excellent response and a long lifetime.
- High quality plastic with special UV protection.
- Easy installation, in just 3 clicks, no tools needed.
- Compact, small-sized single-unit packing.
- Simple, ergonomic mast fixing system to guarantee secure mounting.



SIGNAL RECEPTION

MODEL	RHOMBUS 48	RHOMBUS 5 48	RHOMBUS P 48	RHOMBUS 5 P 48
Reference	84410	84412	84411	84413
Channels	21÷48			
Gain	17 (34 activa)		17	
Impedance	Ω		75	
Back-to-front-ratio	dB		24	
Horizontal opening angle	°		25	
Noise figure	dB		2	
Packing dimensions (1UN)	mm	600 x 375 x 170	600 x 400 x 690	600 x 375 x 170
Weight	Kg	2,15	10	2,15
				10



LIGHTWEIGHT, BUT ROBUST



SELF-ADAPTING



PROTECTION LTE MAXIMALE



HIGH RESISTANCE

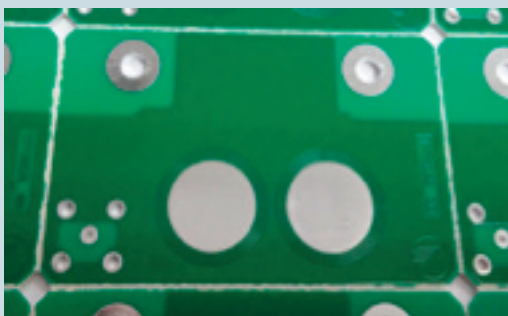


EASY INSTALLATION



COMPACT SINGLE UNIT PACKING

PASSIVE DIPOLE



The new passive dipole incorporates **SRR (Split Ring Resonator)** technology to ensure maximum rejection of 5G signals, while maintaining the gain characteristics of the TV band. Avoid the need to add external filters.

